

# Object REXX for Windows News

## Windows Scripting and GUI Extensions

---

Speaker: Christian Michel ([cmichel@de.ibm.com](mailto:cmichel@de.ibm.com))  
REXX Development, IBM Germany



The 10th International Rexx Symposium  
3-5 May 1999, Jacksonville/Florida

# **OLE/COM/ActiveX Class (I)**

---

- **Access scriptable applications from REXX:**
  - **MS Office products**
  - **Internet Explorer**
  - **Lotus Smartsuite products**
  - **Lotus Notes, etc.**
  
- **Automate activities in these applications:**
  - **Create and print customized letters**
  - **Update spreadsheets with statistics**
  - **Demo mode for Internet Explorer**

# **OLE/COM/ActiveX Class (2)**

---

- **OLE objects can be created by their CLSID or ProgId**
- **All parameter types supported that can be converted to strings**
- **OLE arrays are converted into REXX .Array class objects in both directions**
- **Do..Over support for OLE collection types**

# OLE/COM/ActiveX Samples (I)

---

## ■ Requires MS Common Dialogs Control

(ships with MS development tools, such as Visual Studio, Visual C++, Visual Basic)

## ■ Show File Open Dialog:

```
ComDlg = .OLEObject~New("MSComDlg.CommonDialog")
```

```
ComDlg~MaxFileSize = 256
```

```
ComDlg~InitDir = Directory()
```

```
ComDlg~Filter = "REXX Files|*.REX|REXX Class Definitions|*.CLS|Resource Scripts|*.RC"
```

```
ComDlg~ShowOpen
```

```
Say "Selected Filename:" ComDlg~FileName
```

```
::REQUIRES OREXXOLE.CLS
```

## ■ Show Font Selection Dialog:

```
ComDlg = .OLEObject~New("MSComDlg.CommonDialog")
```

```
ComDlg~Flags = | /* cd|CFScreenFonts */
```

```
ComDlg~ShowFont
```

```
Say "Selected Font:" ComDlg~FontName || "." || ComDlg~FontSize
```

```
::REQUIRES OREXXOLE.CLS
```

# OLE/COM/ActiveX Samples (2)

---

## ■ Show Color Selection Dialog:

```
/* COLORDLG.REX - Use Common Dialogs */  
ComDlg = .OLEObject~New("MSComDlg.CommonDialog")  
ComDlg~Filter = 1 /* cdlCCRGBInit */  
ComDlg~ShowColor  
RGB = ComDlg~Color~D2X~Right(6, "0")  
Red = RGB~SubStr(5, 2)~X2D  
Green = RGB~SubStr(3, 2)~X2D  
Blue = RGB~SubStr(1, 2)~X2D  
Say "Selected Color: Red =" Red "Green =" Green "Blue =" Blue
```

```
::REQUIRES OREXSOLE.CLS
```

# OLE/COM/ActiveX Samples (3)

---

## ■ Display a list of URLs in sequence:

```
/* set the list of URLs to display */
```

```
URLs = .List~Of("http://www.software.ibm.com/ad/obj-rexx/", "http://www2.hursley.ibm.com/rexx")
```

```
/* create an object for Internet Explorer and tailor its appearance */
```

```
Explorer = .OLEObject~New("InternetExplorer.Application")
```

```
Explorer~TheaterMode = .True      /* show document area only */
```

```
Explorer~ToolBar = .False        /* don't show tool bar */
```

```
Explorer~Visible = .True         /* show Internet Explorer */
```

```
/* now loop through the URLs and display them */
```

```
Do Forever
```

```
  Do URL Over URLs
```

```
    Explorer~Navigate(URL)
```

```
    Call SysSleep 20
```

```
  End
```

```
End
```

```
::REQUIRES OREXSOLE.CLS
```

# OLE/COM/ActiveX Samples (4)

---

## ■ Open Word with a document:

```
/* Create a new Word document and insert some text */
```

```
WordApp = .OLEObject~New("Word.Application")
```

```
WordDocs = WordApp~Documents
```

```
NewDocument = WordDocs~Add
```

```
/* Enter some text into first paragraph */
```

```
myRange = NewDocument~Paragraphs(1)~Range
```

```
myRange~Font~Name = "Brush Script"
```

```
myRange~Font~Size = "24"
```

```
myRange~InsertAfter("Hello from REXX!")
```

```
myRange~Words(3)~Bold = .True /* set the last word to bold */
```

```
/* Add a second paragraph with different attributes */
```

```
NewDocument~Paragraphs~Add
```

```
myRange = NewDocument~Paragraphs(2)~Range
```

```
myRange~Font~Name = "Arial"
```

```
myRange~Font~Size = "12"
```

```
myRange~Bold = .False
```

```
myRange~Italic = .False
```

```
myRange~InsertAfter("Greetings from the SHARE Technical Conference in SFO. ")
```

```
myRange~InsertAfter("This document was created on: ")
```

```
myRange~Collapse(0) /* unselect range, go to end (wdCollapseEnd=0) */
```

```
myRange~InsertDateTime("MMMM dd, yyyy at HH:mm:ss")
```

# OLE/COM/ActiveX Samples (5)

---

## ■ Save and print a Word document:

*/\* continued from previous page \*/*

*/\* Save and print document \*/*

**NewDocument~SaveAs("D:\Test.doc")**

**NewDocument~PrintOut**

**WordApp~Quit /\* quit word \*/**

**::REQUIRES OREXSOLE.CLS**



# New OODIALOG Features

---

- **New Win32 Controls supported:**
  - **List View (list, report, icon, small icon view)**
  - **Tree View**
  - **Tab View (notebook)**
  - **Progress Bar**
  - **Slider**
  
- **Resource Workshop & Template Generator extended for new controls**
  - **Workshop shows only outlines for new controls - still 16 bit application :-)**

# **OODIALOG - List View (I)**

---

- **Four different views available:**
  - **List view (small icon and item name)**
  - **Report view (small icon and full item details)**
  - **Icon view (large icon and item name)**
  - **Small icon view (small icon and item name)**
  - **Views can be switched on the fly**
- **Set icons for items in list (small & large)**
- **Insert/delete items in list**
- **Query all items in list**

# **OODIALOG - List View (2)**

---

- **Insert/modify columns**
- **Get notifications for:**
  - **direct edit**
  - **activation (double click)**
  - **drag & drop**
  - **column click**
  - **key pressed**

# OODIALOG List View - Code Samples (I)

---

## ■ Activate notifications:

```
/* connect notifications in INIT method */
```

```
self~ConnectListNotify("IDC_LIST","Activate","OnActivate_IDC_LIST")
```

```
/* Method OnActivate_IDC_LIST handles notification 'Activate' for item IDC_LIST */
```

```
::METHOD OnActivate_IDC_LIST
```

```
Expose curList
```

```
info. = curList~ItemInfo(curList~Selected)
```

```
If info.!Image = 0 Then Do
```

```
  /* change to the selected directory */
```

```
  curDir = self~GetValue("IDC_DIRECTORY")
```

```
  If curDir~Right(1) = "\" Then curDir = curDir~Left(curDir~Length - 1)
```

```
  If info.!Text = ".." Then
```

```
    newDir = curDir~Left(curDir~LastPos("\") - 1) || "\" /* remove one directory from current path */
```

```
  Else
```

```
    newDir = curDir || "\" || info.!Text || "\"
```

```
  self~SetValue("IDC_DIRECTORY", newDir)
```

```
  self~IDC_REFRESH
```

```
End
```

# OODIALOG List View - Code Samples (2)

---

## ■ Setup report view and associated icons:

```
::METHOD InitDialog
```

```
Expose curList
```

```
InitDlgRet = self~InitDialog:super
```

```
/* Set image list for List control IDC_LIST */
```

```
curList = self~GetListControl("IDC_LIST")
```

```
curList~SetSmallImages("ListSml.bmp",17,17)
```

```
curList~SetImages("Listlco.bmp",34,34)
```

```
/* Add items (and columns) to the list control here using Add or AddRow (and InsertColumn) */
```

```
curList~InsertColumn(0, "Filename", 50)
```

```
curList~InsertColumn(1, "Size", 25, "RIGHT")
```

```
curList~InsertColumn(2, "Date", 35)
```

```
curList~InsertColumn(3, "Time", 30)
```

```
curList~InsertColumn(4, "Attribs", 25)
```

```
/* Initialization Code (e.g. fill list and combo boxes) */
```

```
Return InitDlgRet
```

# OODIALOG List View - Code Samples (3)

---

## ■ Delete and insert items:

```
::METHOD IDC_REFRESH /* Method IDC_REFRESH is connected to item IDC_REFRESH */
  Expose curList
  curList~DeleteAll
  /* get a list of all files in specified directory */
  curDir = self~GetValue("IDC_DIRECTORY")
  If curDir~Right(1) \= "\" Then curDir = curDir || "\"
  If curDir~Length > 3 Then curList~AddRow(0, "..")
  pattern = curDir || "*"
  Call SysFileTree pattern, "Files.", "BL"
  Do i = 1 To Files.0
    FileName = Files.i~SubStr(Files.i~WordIndex(5))
    FileName = FileSpec("NAME", FileName)
    FileSize = Files.i~Word(3)
    FileDate = Files.i~Word(1)
    FileTime = Files.i~Word(2)
    FileAttribs = Files.i~Word(4)
    If FileAttribs~Pos("D") \= 0 Then FileIcon = 0
    Else FileIcon = 1
    curList~AddRow(,FileIcon, FileName, FileSize, FileDate, FileTime, FileAttribs)
  End
```

# OODIALOG List View - Code Samples (4)

---

## ■ Switch between views:

```
::METHOD ShowList /* Method ShowList is connected to item IDC_RADIOLIST */
```

```
  Expose curList curStyle
```

```
  curList~ReplaceStyle(curStyle, "LIST")
```

```
  curStyle = "LIST"
```

```
::METHOD ShowReport /* Method ShowReport is connected to item IDC_RADIOREPORT */
```

```
  Expose curList curStyle
```

```
  curList~ReplaceStyle(curStyle, "REPORT")
```

```
  curStyle = "REPORT"
```

```
::METHOD ShowIcon /* Method ShowIcon is connected to item IDC_RADIOICON */
```

```
  Expose curList curStyle
```

```
  curList~ReplaceStyle(curStyle, "ICON")
```

```
  curStyle = "ICON"
```

```
::METHOD ShowSmallIcon /* Method ShowSmallIcon is connected to item IDC_RADIOSMALLICON */
```

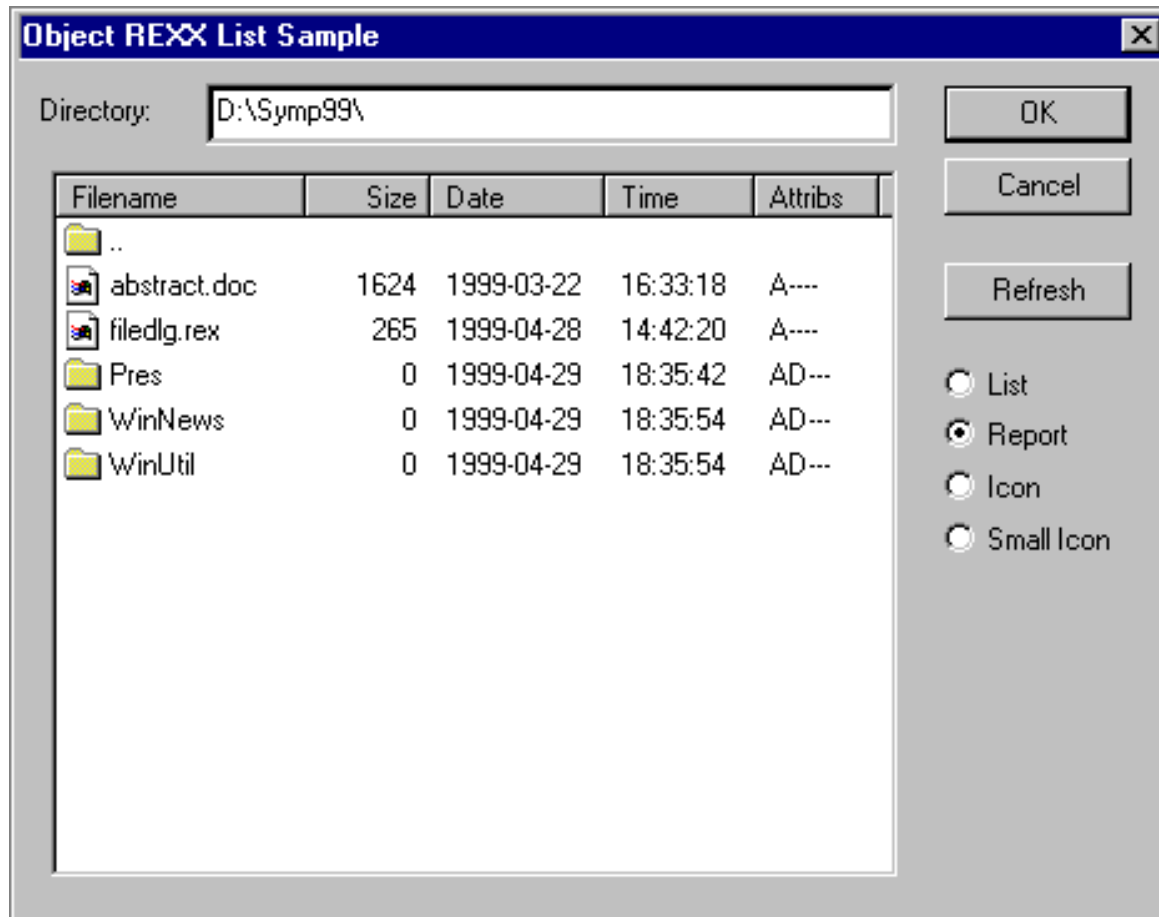
```
  Expose curList curStyle
```

```
  curList~ReplaceStyle(curStyle, "SMALLICON")
```

```
  curStyle = "SMALLICON"
```

# OODIALOG List View - Sample Dialog

---





# **OODIALOG - Tree View**

---

- **Set icons for items in tree**
- **Expand/collapse full tree or parts of it**
- **Insert/delete/move/sort items**
- **Query all items in tree**
- **Get notifications for:**
  - **direct edit**
  - **drag & drop**
  - **selection**
  - **key pressed**

# OODIALOG Tree View - Code Samples (I)

---

## ■ Activate notifications:

```
/* connect notifications in INIT method */
```

```
self~ConnectTreeNotify("IDC_TREE","SelChanged","OnSelChanged_IDC_TREE")
```

```
self~ConnectTreeNotify("IDC_TREE","KeyDown","OnKeyDown_IDC_TREE")
```

```
/* Method OnSelChanged_IDC_TREE handles notification 'SelChanged' for item IDC_TREE */
```

```
::METHOD OnSelChanged_IDC_TREE
```

```
Expose curTree selltem
```

```
curTree~Modify(selltem,,,, "NOTBOLD")
```

```
selltem = curTree~Selected
```

```
curTree~Modify(selltem,,,, "BOLD")
```

```
/* Method OnKeyDown_IDC_TREE handles notification 'KeyDown' for item IDC_TREE */
```

```
::METHOD OnKeyDown_IDC_TREE
```

```
Expose curTree selltem
```

```
Use Arg treeld, Key
```

```
/* if DELETE key is pressed delete the selected item */
```

```
If self~KeyName(Key) = "DELETE" Then
```

```
self~IDC_DELETE
```

# OODIALOG Tree View - Code Samples (2)

---

## ■ Insert new items (a folder in this sample):

```
/* Method IDC_NEWFOLDER is connected to item IDC_NEWFOLDER */
```

```
::METHOD IDC_NEWFOLDER
```

```
Expose curTree sellItem
```

```
/* get new folder name */
```

```
Input = .InputBox~New("Enter new folder name:", "Folder Name")
```

```
newFldr = Input~Execute
```

```
If newFldr \= "" Then Do
```

```
  /* look at selected item */
```

```
  info. = curTree~ItemInfo(sellItem)
```

```
  If info.!Image = 0 Then
```

```
    /* this is a folder, create new folder as a child */
```

```
    newPos = sellItem
```

```
  Else
```

```
    /* this is an item, create new folder as a sibling */
```

```
    newPos = curTree~Parent(sellItem)
```

```
  curTree~Insert(newPos, "LAST", newFldr, 0, 1)
```

```
  curTree~Expand(newPos)
```

```
End
```

# OODIALOG Tree View - Code Samples (3)

---

## ■ List all items in tree

```
/* list items in tree, then terminate */
```

```
Say "The following items are in the tree:"
```

```
Call ListItems curTree, curTree~Root, 0
```

```
::ROUTINE ListItems
```

```
Use Arg treeCtrl, Item, Indent
```

```
Do While Item \= 0
```

```
info. = treeCtrl~ItemInfo(Item)
```

```
Say Copies(" ", Indent) || info.!Text
```

```
Child = treeCtrl~Child(Item)
```

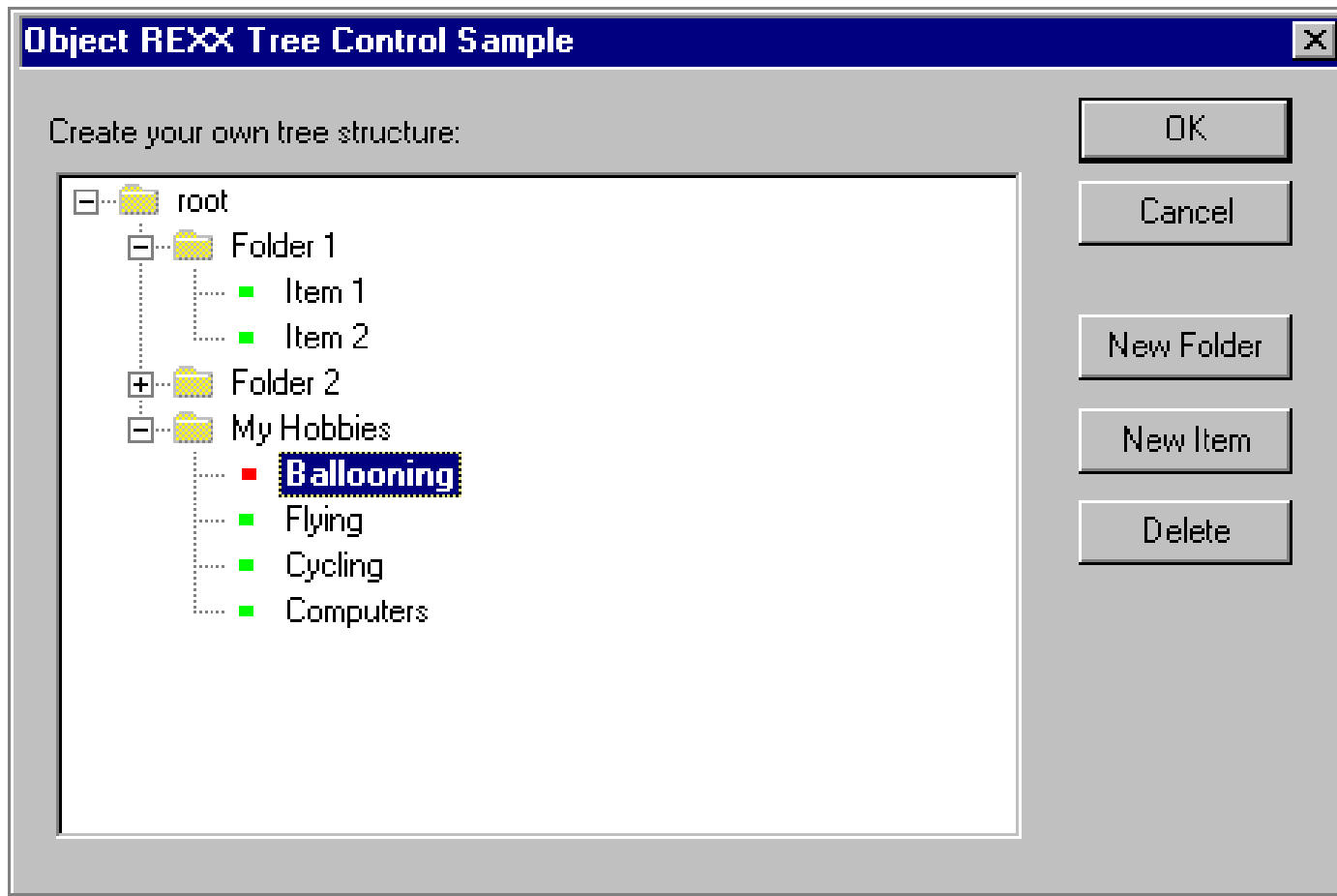
```
If Child \= 0 Then
```

```
Call ListItems treeCtrl, Child, Indent + 2
```

```
Item = treeCtrl~Next(Item)
```

```
End
```

# OODIALOG Tree View - Sample Dialog



# **OODIALOG - Progress Bar/Slider**

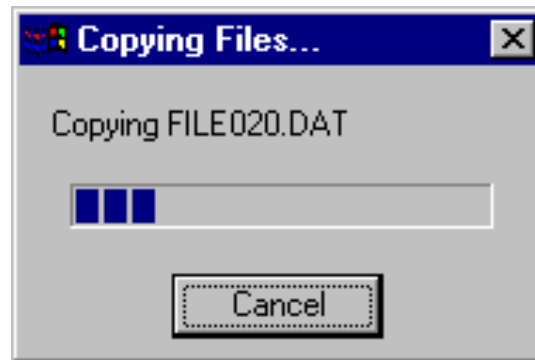
---

- **Customizable progress indicator**
  - **horizontal/vertical**
  - **smooth/discrete progress**
  - **minimum and maximum values**
- **Customizable slider input control**
  - **horizontal/vertical**
  - **tick mark locations/intervals**
  - **notifications for user changes**

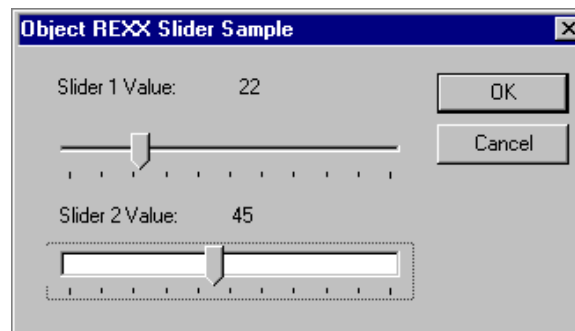
# OODIALOG - Progress Bar & Slider Samples

---

- **File copy progress dialog:**



- **Slider sample:**



# Further Information

---

## **Object REXX Homepage:**

<http://www.software.ibm.com/ad/obj-rexx/>

## **Object REXX Service & Support Page:**

<http://service.software.ibm.com/dl/rexx/orexx-d>

